

TP + Ch1. + Ch. 2

- DSI -

LMCC

No.	Ano	TP	Ch1	Ch2	Class.
28139	3	13	12.2	0	13
23775	5	NA	0.0	0	NA
30709	4	12	8.9	0	10
23179	4	10	4.9	0	Rep.
20201	5	NA	0.0	0	NA
28152	4	12	13.5	0	13
23186	5	NA	0.0	0	NA
20213	5	NA	0.0	0	NA
21809	5	NA	0.0	0	NA
28184	4	12	15.6	0	14
20838	4	13	0.0	9.7	11

No.	Ano	TP	Ch1	Ch2	Class.
19668	5	NA	0.0	0.0	NA
24798	4	NA	0.0	0.0	NA
22637	4	NA	0.0	0.0	NA
27591	3	11	0.0	7.9	Rep.
30164	3	16	11.1	0.0	13
24803	4	NA	5.8	0.0	NA
30167	4	NA	0.0	0.0	NA
19674	5	NA	0.0	0.0	NA
22643	4	9	8.5	0.0	Rep.
22645	5	NA	0.0	0.0	NA
30170	3	12	0.0	0.0	Rep.
30171	4	11	14.1	0.0	13
30174	4	11	0.0	15.3	14
30175	4	16	16.7	0.0	16
27597	4	9	11.3	0.0	10
30179	4	11	0.0	15.9	14
24755	4	13	10.3	0.0	11
25014	4	11.5	4.5	0.0	Rep.
17832	5	NA	0.0	0.0	NA
27601	4	9	0.0	0.0	Rep.
24813	5	NA	0.0	5.6	NA
27603	4	11	14.5	0.0	13
30183	3	9	14.7	0.0	12
30184	4	12	0.0	17.3	15
27605		13	0.0	10.0	11
30186	4	12	0.0	13.6	13
28900	5	NA	0.0	0.0	NA
26212	5	NA	0.0	0.0	NA
16975	3	13	11.0	0.0	12
24824	5	NA	0.0	0.0	NA
32649	4	11	9.4	0.0	10
12613	4	NA	0.0	0.0	NA
10855	4	NA	0.0	0.0	NA
19699	4	NA	8.3	0.0	NA
10859	5	NA	0.0	0.0	NA
30199	4	13	8.5	0.0	10
27619	3	NA	0.0	0.0	NA
22659	5	NA	0.0	6.5	NA
27621	4	13	15.7	0.0	15
17854	5	NA	0.0	0.0	NA
30203	4	16	12.7	0.0	14
30204	3	NA	0.0	0.0	NA
30205	3	NA	0.0	0.0	NA
24829	3	NA	14.0	0.0	NA
27623	4	11	10.0	0.0	10
19703	4	11.5	0.0	5.8	Rep.
19704	4	NA	0.0	0.0	NA
22668	4	9	0.0	9.1	Rep.
24990	4	11	0.0	11.9	12
19705	3	NA	0.0	0.0	NA
24831	3	NA	0.0	0.0	NA

TP + Ch. 1 + Ch. 2

- DSI -

LESI

27626	3	NA	0.0	0.0	NA
24833	3	NA	0.0	0.0	NA
24834	3	11	5.4	0.0	Rep.
17863	4	NA	0.0	0.0	NA
19709	5	14	14.1	0.0	14
19490	5	NA	0.0	0.0	NA
24840	3	NA	0.0	0.0	NA
30216	3	10	6.8	0.0	Rep.
14533	4	NA	0.0	0.0	NA
22678	3	NA	0.0	7.0	NA
22679	5	NA	0.0	0.0	NA
27633	3	11	0.0	5.3	Rep.
30217	4	15	13.4	0.0	14
28989	4	9	10.8	0.0	10
22676	4	NA	0.0	0.0	NA
24845	4	10	15.6	0.0	13
29004	4	NA	0.0	0.0	NA
19717	3	NA	0.0	0.0	NA
12638	3	NA	0.0	0.0	NA
24851	3	NA	0.0	0.0	NA
30221	4	10	4.7	0.0	Rep.
30222	4	15	17.6	0.0	17
30224	4	NA	0.0	0.0	NA
22692	4	10	8.0	0.0	Rep.
24856	5	14	0.0	0.0	Rep.
17875	4	13	0.0	6.3	Rep.
29063	4	**	**	0.0	10
19697	4	NA	0.0	0.0	NA
22696	3	11	0.0	14.7	13
30232	4	9	12.9	0.0	11
27643	3	11.5	12.7	0.0	12
27646	4	12	10.5	0.0	11
10897	4	NA	0.0	0.0	NA
30234	3	11	0.0	0.0	Rep.
15623	4	NA	0.0	0.0	NA
24864	3	13	0.0	7.0	Rep.
22703	3	15	0.0	12.9	14
30235	4	16	0.0	17.7	17
19740	4	**	**	0.0	11
30236	4	15	0.0	13.8	14
13008	4	NA	0.0	0.0	NA
26337	4	11.5	0.0	10.2	11
21709	4	NA	0.0	0.0	NA
30239	4	13	8.5	0.0	10
14542	5	NA	0.0	0.0	NA
19449	3	NA	0.0	0.0	NA
27652	4	12	8.8	0.0	10
27655	4	NA	0.0	0.0	NA
24868	4	11	5.0	0.0	Rep.
27657	4	13	6.1	0.0	Rep.
24869	3	9	14.6	0.0	12
15631	4	NA	0.0	0.0	NA

TP + Ch. 1 + Ch. 2

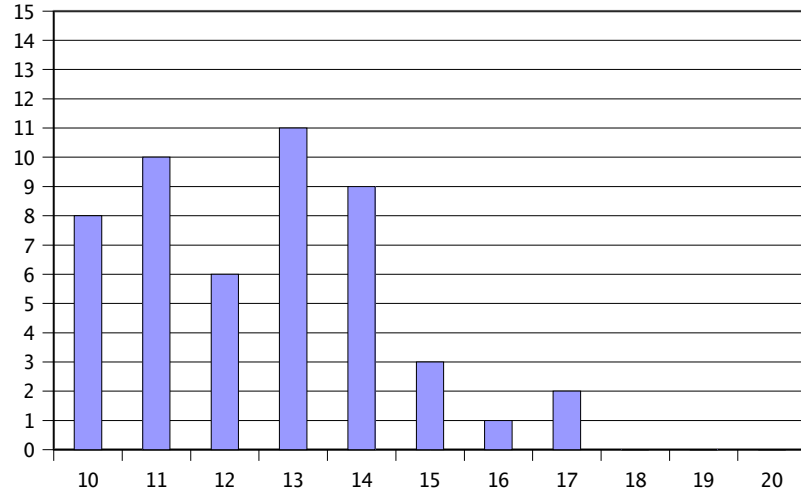
- DSI -

LESI

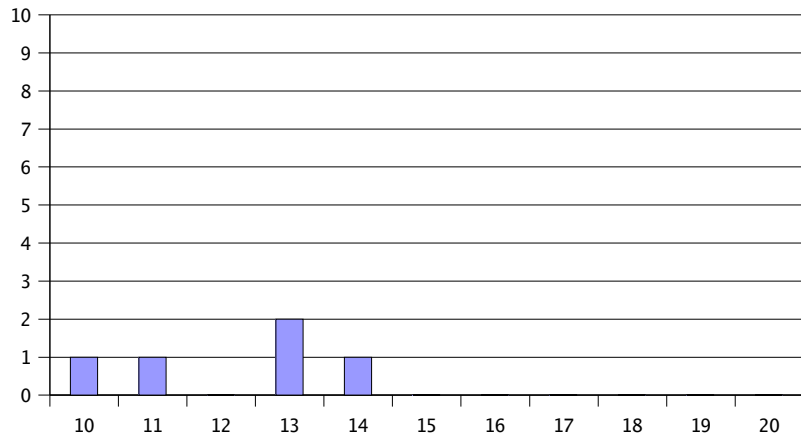
17893	4	*11*	5.3	0.0	Rep.
30245	3	NA	0.0	0.0	NA
30249	4	12	0.0	16.0	14
27662	3	NA	0.0	0.0	NA
30251	3	11	14.6	0.0	13
19753	3	14	8.8	0.0	11
22719	5	15	13.3	0.0	14
30252	4	9	0.0	14.9	13
27666	4	13	11.2	0.0	12
30256	3	NA	0.0	0.0	NA
30257	4	11	0.0	14.0	13
23818	3	NA	0.0	0.0	NA
24873	3	NA	0.0	0.0	NA
30258	4	11	15.1	0.0	13
24878	4	14	0.0	9.6	11
30261	3	10	7.1	0.0	Rep.
22725	4	9	4.8	0.0	Rep.
27678	3	NA	0.0	0.0	NA
27683	3	12	6.3	0.0	Rep.
24881	4	NA	0.0	0.0	NA
23819	3	NA	0.0	0.0	NA
17908	4	NA	0.0	0.0	NA
24888	4	9	0.0	0.0	Rep.
23937	4	9	0.0	5.4	Rep.
27684	3	NA	0.0	0.0	NA
15653	5	NA	0.0	0.0	NA
27685	4	16	0.0	14.0	15
27686	4	13	13.2	0.0	13
30265	3	NA	0.0	0.0	NA
24894	5	14	0.0	8.4	11
9897	4	NA	0.0	0.0	NA
24895	5	14	8.5	0.0	11
13635	3	NA	0.0	0.0	NA
921e		16	3.9	0.0	Rep.

TP + Ch. 1 + Ch. 2

Aprovados 50
Rep 24
NA 62

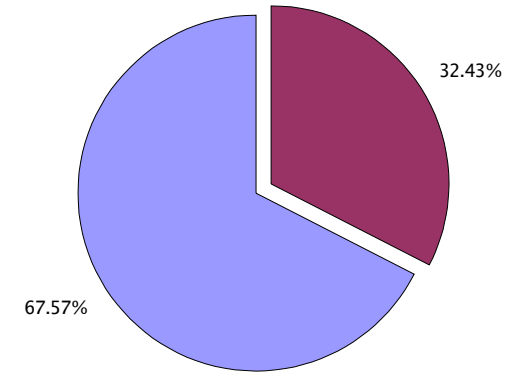
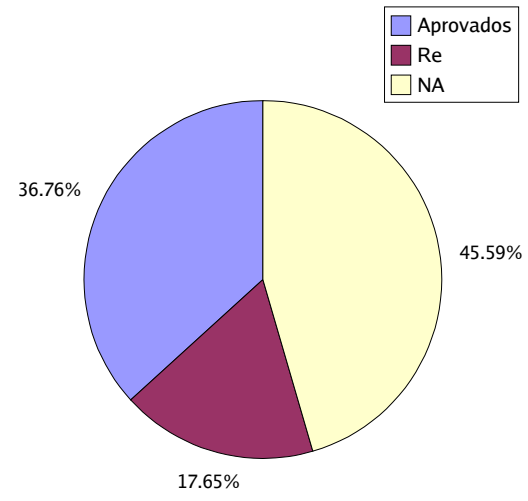


Aprovados 5
Rep 1
NA 5

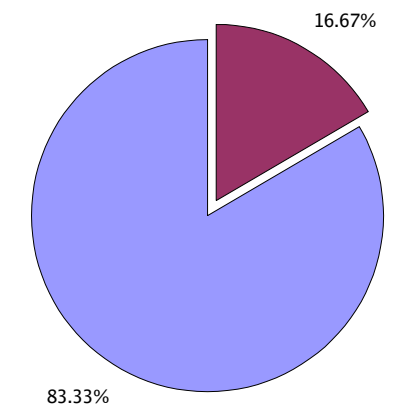
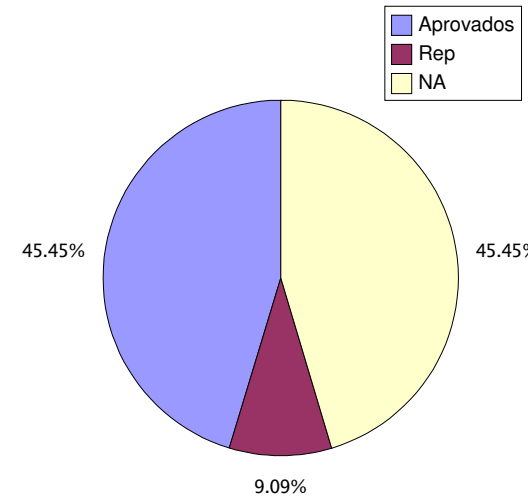


- DSI -

LESI



LMCC



TP + Ch. 1 + Ch. 2

- DSI -