

<b>No.</b>	<b>Ano</b>	<b>TP</b>	<b>Ch1</b>	<b>Ch2</b>	<b>Rec.</b>	<b>Class Final</b>
28139	3	13	12.2	0	0	<b>13</b>
23775	5	NA	0.0	0	0	<b>Reprovado</b>
30709	4	12	8.9	0	0	<b>10</b>
23179	4	10	4.9	0	10.5	<b>10</b>
20201	5	NA	0.0	0	0	<b>Reprovado</b>
28152	4	12	13.5	0	0	<b>13</b>
23186	5	NA	0.0	0	0	<b>Reprovado</b>
20213	5	NA	0.0	0	0	<b>Reprovado</b>
21809	5	NA	0.0	0	0	<b>Reprovado</b>
28184	4	12	15.6	0	0	<b>14</b>
20838	4	13	0.0	9.7	17.7	<b>16</b>

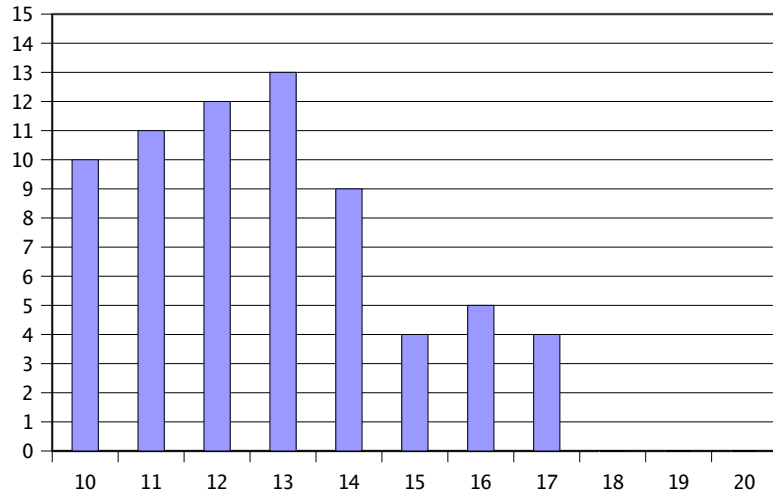
No.	Ano	TP	Ch1	Ch2	Rec.	Class Final
19668	5	NA	0.0	0.0	0.0	Reprovado
24798	4	NA	0.0	0.0	0.0	Reprovado
22637	4	NA	0.0	0.0	0.0	Reprovado
27591	3	11	0.0	7.9	8.1	Reprovado
30164	3	16	11.1	0.0	0.0	13
24803	4	NA	5.8	0.0	0.0	Reprovado
30167	4	NA	0.0	0.0	0.0	Reprovado
19674	5	NA	0.0	0.0	0.0	Reprovado
22643	4	9	8.5	0.0	11.2	10
22645	5	NA	0.0	0.0	0.0	Reprovado
30170	3	12	0.0	0.0	17.1	15
30171	4	11	14.1	0.0	0.0	13
30174	4	11	0.0	15.3	0.0	14
30175	4	16	16.7	0.0	0.0	16
27597	4	9	11.3	0.0	0.0	10
30179	4	11	0.0	15.9	0.0	14
24755	4	13	10.3	0.0	0.0	11
25014	4	11.5	4.5	0.0	13.3	13
17832	5	NA	0.0	0.0	0.0	Reprovado
27601	4	9	0.0	0.0	0.0	Reprovado
24813	5	NA	0.0	5.6	0.0	Reprovado
27603	4	11	14.5	0.0	0.0	13
30183	3	9	14.7	0.0	0.0	12
30184	4	12	0.0	17.3	0.0	15
27605		13	0.0	10.0	0.0	11
30186	4	12	0.0	13.6	18.8	16
28900	5	11.5	13.8	0.0	0.0	13
26212	5	11.5	14.3	0.0	0.0	13
16975	3	13	11.0	0.0	0.0	12
24824	5	NA	0.0	0.0	0.0	Reprovado
32649	4	11	9.4	0.0	0.0	10
12613	4	NA	0.0	0.0	0.0	Reprovado
10855	4	NA	0.0	0.0	0.0	Reprovado
19699	4	NA	8.3	0.0	0.0	Reprovado
10859	5	NA	0.0	0.0	0.0	Reprovado
30199	4	13	8.5	0.0	0.0	10
27619	3	NA	0.0	0.0	0.0	Reprovado
22659	5	NA	0.0	6.5	0.0	Reprovado
27621	4	13	15.7	0.0	0.0	15
17854	5	NA	0.0	0.0	0.0	Reprovado
30203	4	16	12.7	0.0	0.0	14
30204	3	NA	0.0	0.0	0.0	Reprovado
30205	3	NA	0.0	0.0	0.0	Reprovado
24829	3	NA	14.0	0.0	0.0	Reprovado
27623	4	11	10.0	0.0	0.0	10
19703	4	11.5	0.0	5.8	9.6	10
19704	4	NA	0.0	0.0	0.0	Reprovado
22668	4	9	0.0	9.1	17.3	14
24990	4	11	0.0	11.9	0.0	12
19705	3	NA	0.0	0.0	0.0	Reprovado
24831	3	NA	0.0	0.0	0.0	Reprovado

27626	3	NA	0.0	0.0	0.0	<b>Reprovado</b>
24833	3	NA	0.0	0.0	0.0	<b>Reprovado</b>
24834	3	11	5.4	0.0	11.0	<b>11</b>
17863	4	NA	0.0	0.0	0.0	<b>Reprovado</b>
19709	5	14	14.1	0.0	0.0	<b>14</b>
19490	5	NA	0.0	0.0	0.0	<b>Reprovado</b>
24840	3	NA	0.0	0.0	0.0	<b>Reprovado</b>
30216	3	10	6.8	0.0	12.8	<b>12</b>
14533	4	NA	0.0	0.0	0.0	<b>Reprovado</b>
22678	3	NA	0.0	7.0	0.0	<b>Reprovado</b>
22679	5	17	17.0	0.0	0.0	<b>17</b>
27633	3	11	0.0	5.3	12.2	<b>12</b>
30217	4	15	13.4	0.0	17.6	<b>17</b>
28989	4	9	10.8	0.0	0.0	<b>10</b>
22676	4	NA	0.0	0.0	0.0	<b>Reprovado</b>
24845	4	10	15.6	0.0	0.0	<b>13</b>
29004	4	NA	0.0	0.0	0.0	<b>Reprovado</b>
19717	3	NA	0.0	0.0	0.0	<b>Reprovado</b>
12638	3	NA	0.0	0.0	0.0	<b>Reprovado</b>
24851	3	NA	0.0	0.0	0.0	<b>Reprovado</b>
30221	4	10	4.7	0.0	7.8	<b>Reprovado</b>
30222	4	15	17.6	0.0	0.0	<b>17</b>
30224	4	NA	0.0	0.0	0.0	<b>Reprovado</b>
22692	4	10	8.0	0.0	13.0	<b>12</b>
24856	5	14	0.0	0.0	11.7	<b>13</b>
17875	4	13	0.0	6.3	6.1	<b>Reprovado</b>
29063	4	10	10.0	0.0	0.0	<b>10</b>
19697	4	NA	0.0	0.0	0.0	<b>Reprovado</b>
22696	3	11	0.0	14.7	0.0	<b>13</b>
30232	4	9	12.9	0.0	0.0	<b>11</b>
27643	3	11.5	12.7	0.0	0.0	<b>12</b>
27646	4	12	10.5	0.0	0.0	<b>11</b>
10897	4	NA	0.0	0.0	0.0	<b>Reprovado</b>
30234	3	11	0.0	0.0	9.9	<b>10</b>
15623	4	NA	0.0	0.0	0.0	<b>Reprovado</b>
24864	3	13	0.0	7.0	9.7	<b>11</b>
22703	3	15	0.0	12.9	0.0	<b>14</b>
30235	4	16	0.0	17.7	0.0	<b>17</b>
19740	4	11	11.0	0.0	0.0	<b>11</b>
30236	4	15	0.0	13.8	16.2	<b>16</b>
13008	4	NA	0.0	0.0	0.0	<b>Reprovado</b>
26337	4	11.5	0.0	10.2	0.0	<b>11</b>
21709	4	NA	0.0	0.0	0.0	<b>Reprovado</b>
30239	4	13	8.5	0.0	16.3	<b>15</b>
14542	5	NA	0.0	0.0	0.0	<b>Reprovado</b>
19449	3	NA	0.0	0.0	0.0	<b>Reprovado</b>
27652	4	12	8.8	0.0	0.0	<b>10</b>
27655	4	NA	0.0	0.0	0.0	<b>Reprovado</b>
24868	4	11	5.0	0.0	13.1	<b>12</b>
27657	4	13	6.1	0.0	10.8	<b>12</b>
24869	3	9	14.6	0.0	0.0	<b>12</b>
15631	4	NA	0.0	0.0	0.0	<b>Reprovado</b>

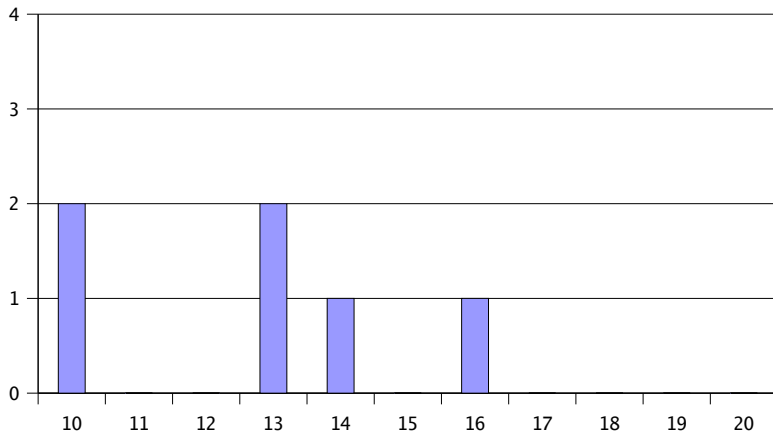
17893	4	11	5.3	0.0	12.3		12
30245	3	NA	0.0	0.0	0.0	Reprovado	
30249	4	12	0.0	16.0	0.0		14
27662	3	NA	0.0	0.0	0.0	Reprovado	
30251	3	11	14.6	0.0	0.0		13
19753	3	14	8.8	0.0	0.0		11
22719	5	15	13.3	0.0	0.0		14
30252	4	9	0.0	14.9	0.0		13
27666	4	13	11.2	0.0	0.0		12
30256	3	NA	0.0	0.0	0.0	Reprovado	
30257	4	11	0.0	14.0	0.0		13
23818	3	NA	0.0	0.0	0.0	Reprovado	
24873	3	NA	0.0	0.0	0.0	Reprovado	
30258	4	11	15.3	0.0	0.0		14
24878	4	14	0.0	9.6	0.0		11
30261	3	10	7.1	0.0	8.3	Reprovado	
22725	4	9	4.8	0.0	8.7	Reprovado	
27678	3	NA	0.0	0.0	0.0	Reprovado	
27683	3	12	6.3	0.0	0.0	Reprovado	
24881	4	NA	0.0	0.0	0.0	Reprovado	
23819	3	NA	0.0	0.0	0.0	Reprovado	
17908	4	NA	0.0	0.0	0.0	Reprovado	
24888	4	9	0.0	0.0	0.0	Reprovado	
23937	4	9	0.0	5.4	8.6	Reprovado	
27684	3	NA	0.0	0.0	0.0	Reprovado	
15653	5	NA	0.0	0.0	0.0	Reprovado	
27685	4	16	0.0	14.0	16.2		16
27686	4	13	13.2	0.0	0.0		13
30265	3	NA	0.0	0.0	0.0	Reprovado	
24894	5	14	0.0	8.4	0.0		11
9897	4	NA	0.0	0.0	0.0	Reprovado	
24895	5	14	8.5	0.0	16.8		16
13635	3	NA	0.0	0.0	0.0	Reprovado	
921e		16	3.9	0.0	10.0		12

Pauta Final

**Aprovados** 68  
**Rep** 9  
**NA** 59



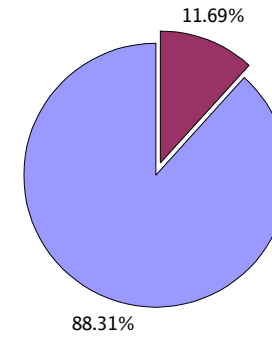
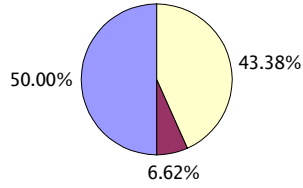
**Aprovados** 6  
**Rep** 0  
**NA** 5



- DSI -

**LESI**

Aprovados  
 Rep  
 NA



**LMCC**

